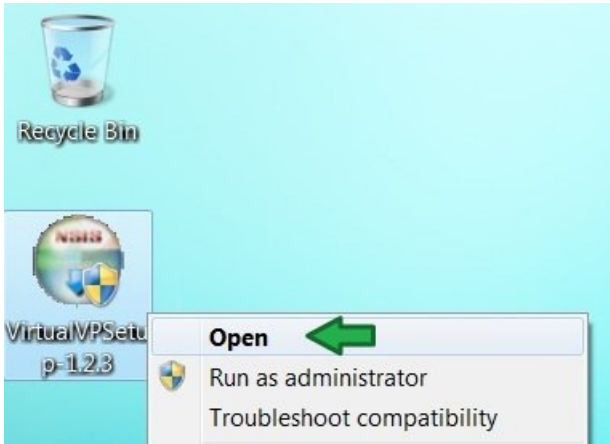


Install and Configure VirtualVP

Dec 6, 2009

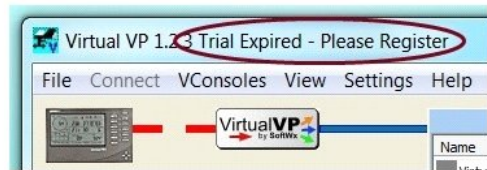
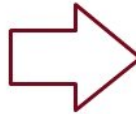
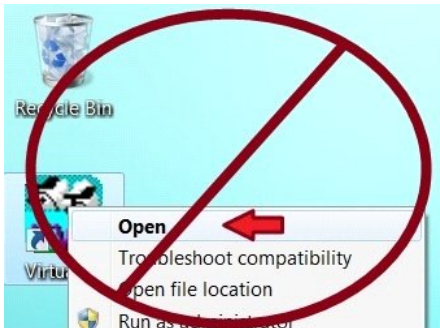
©2009 SoftWx, Inc.

1) Open install program (VirtualVPSetup-1.2.3), and follow instructions

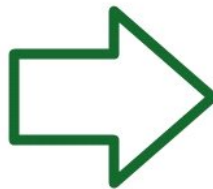
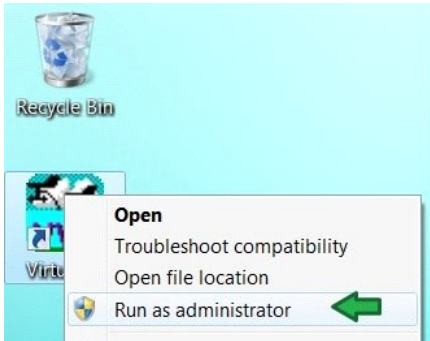


2) Run the **1st** time ...

Do not just open VirtualVP

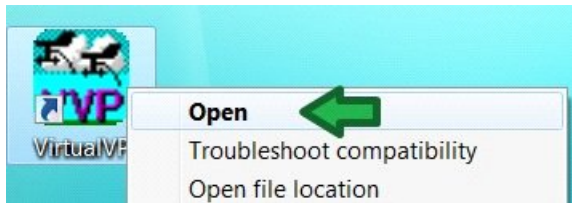


You must run as administrator once to initialize the 30 day trial

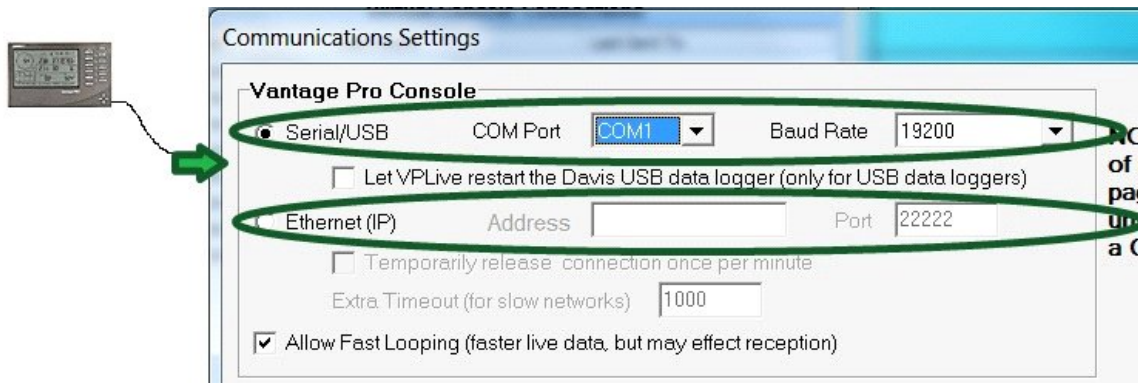


3) After you run as administrator, you can open normally from then on

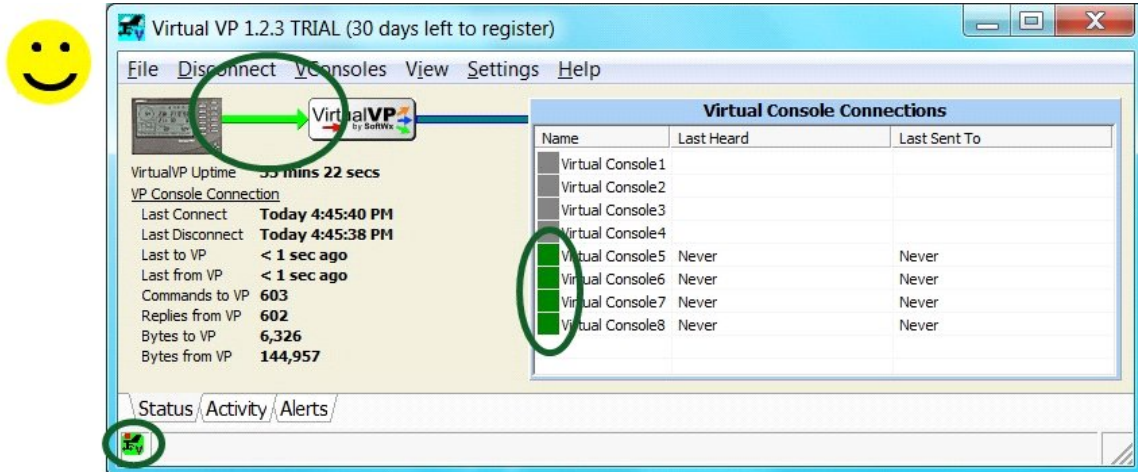
2nd, 3rd, 4th...



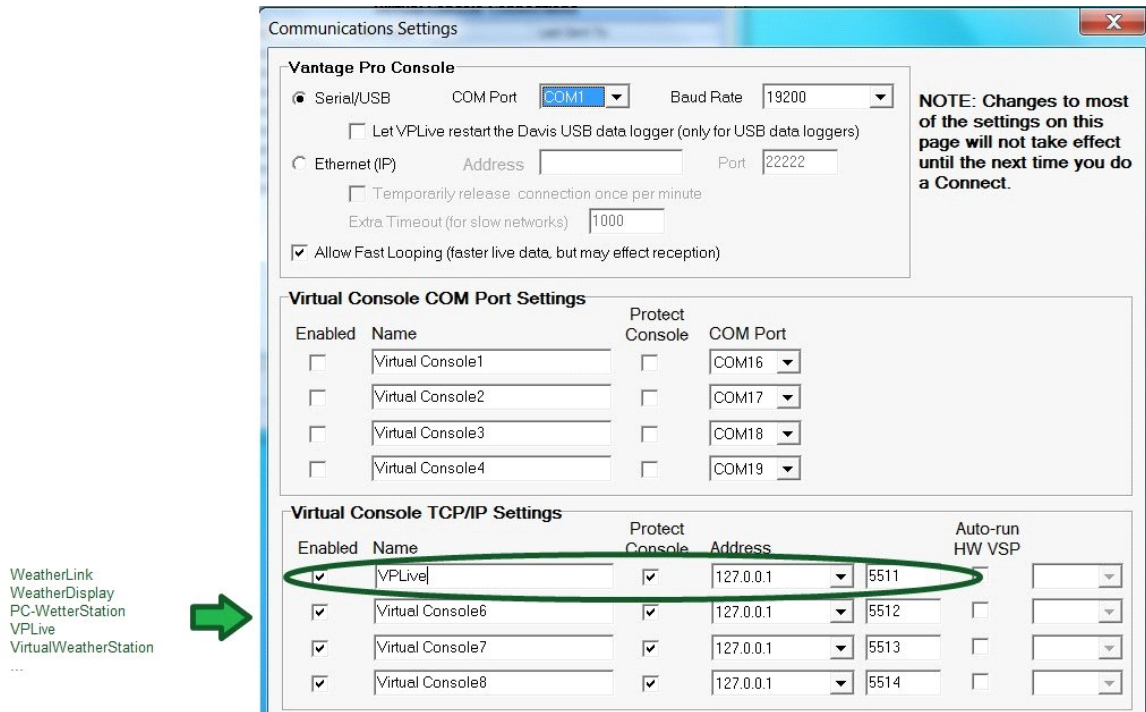
4) Configure connection to Vantage Pro data logger



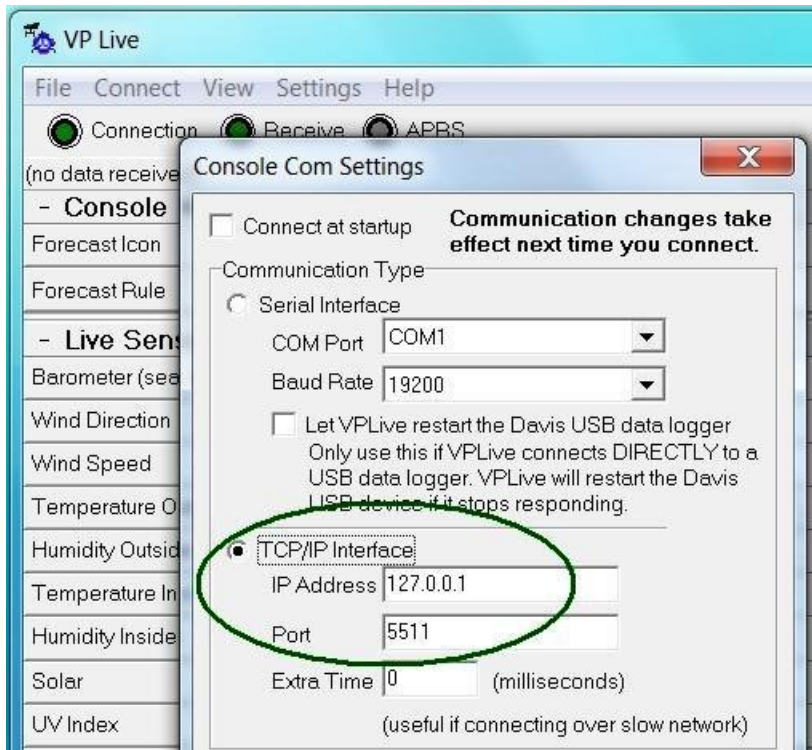
5) Success!!



6) VirtualVP supports TCP/IP connections without the need for any special drivers



7) Configure a weather program (like VPLive) to talk to VirtualVP



8) Success!!



The screenshot shows the VirtualVP 1.2.3 TRIAL software interface. The main window displays connection statistics and a table of Virtual Console Connections. A green circle highlights the 'Connection' status in the left sidebar, and another green circle highlights the 'VPLive' entry in the 'Virtual Console Connections' table.

VirtualVP 1.2.3 TRIAL (30 days left to register)

File Disconnect VConsoles View Settings Help

VirtualVP Uptime: **50 mins 48 secs**

VP Console Connection

Last Connect: **Today 4:59:58 PM**

Last Disconnect: **Today 4:59:57 PM**

Last to VP: **< 1 sec ago**

Last from VP: **< 1 sec ago**

Commands to VP: **1,066**

Replies from VP: **1,066**

Bytes to VP: **10,501**

Bytes from VP: **192,888**

Virtual Console Connections		
Name	Last Heard	Last Sent To
Virtual Console1		
Virtual Console2		
Virtual Console3		
Virtual Console4		
VPLive	20 secs ago	< 1 sec ago
Virtual Console6	Never	Never
Virtual Console7	Never	Never
Virtual Console8	Never	Never

Status / Activity / Alerts

Wind Speed: **0 mph**

Temperature Outside: **21.8 °F**

Madis Altim. 1 Min Low: **29.863 inHg**

ASOS Altim. 1 Min Low: **29.875 inHg**

Barometer Trend: **Steady**

Storm StartDate: **-**